



BASIN MANAGEMENT ACTION PLANS

Kevin Coyne, Program Administrator
Water Quality Restoration Program
Division of Environmental Assessment and Restoration
Florida Department of Environmental Protection



WATER QUALITY RESTORATION

SECTION 403.067, FLORIDA STATUTES





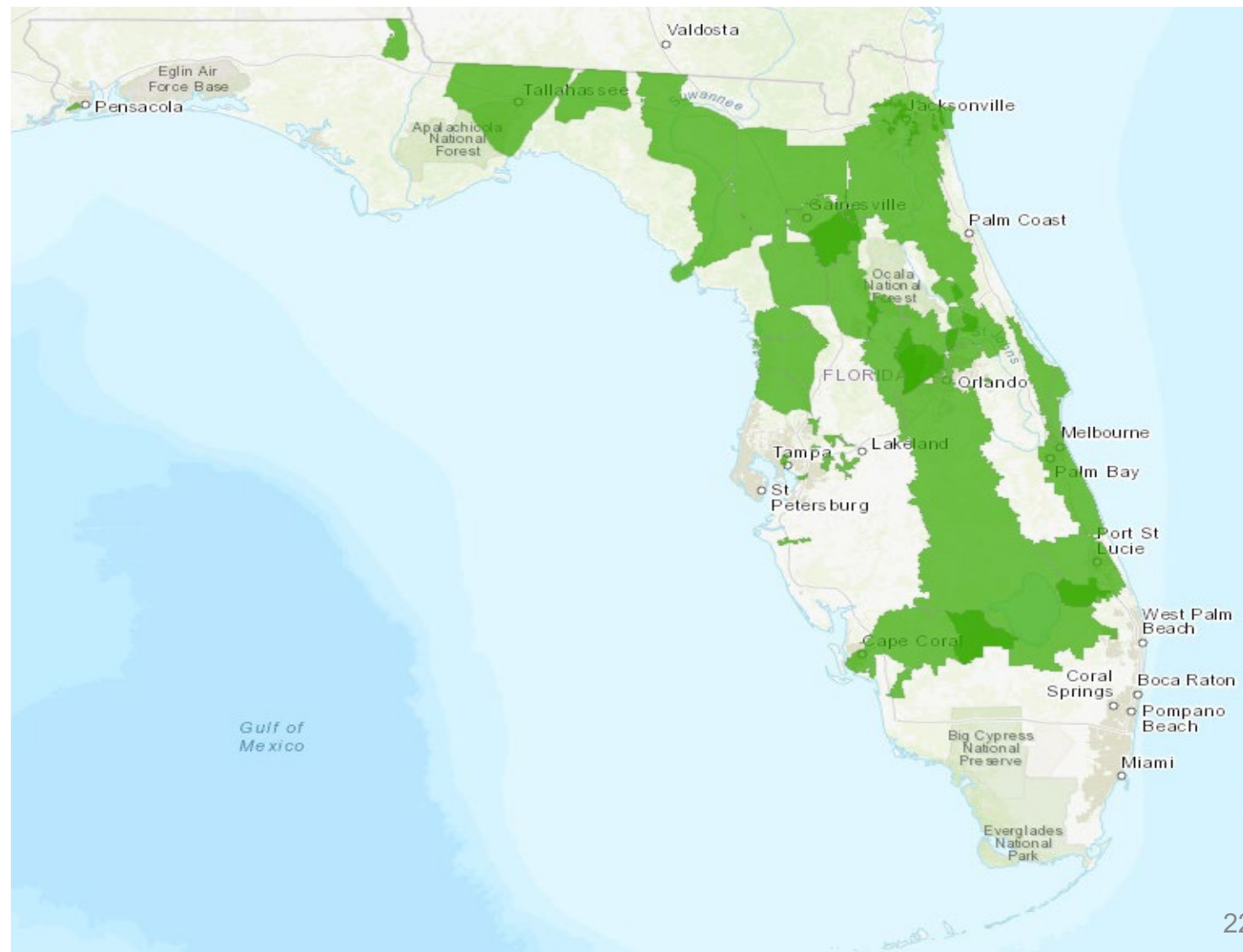
BASIN MANAGEMENT ACTION PLANS (BMAPS)

- BMAPs are adopted by DEP through a secretarial order.
- BMAPs includes restoration projects, management strategies and research (and the list keeps growing).
- BMAPs are reviewed annually – reported in the Statewide Annual Report (STAR).
- BMAPs updated ~ five years.
- Over 30 BMAPs currently in place and effective (nutrients and bacteria).



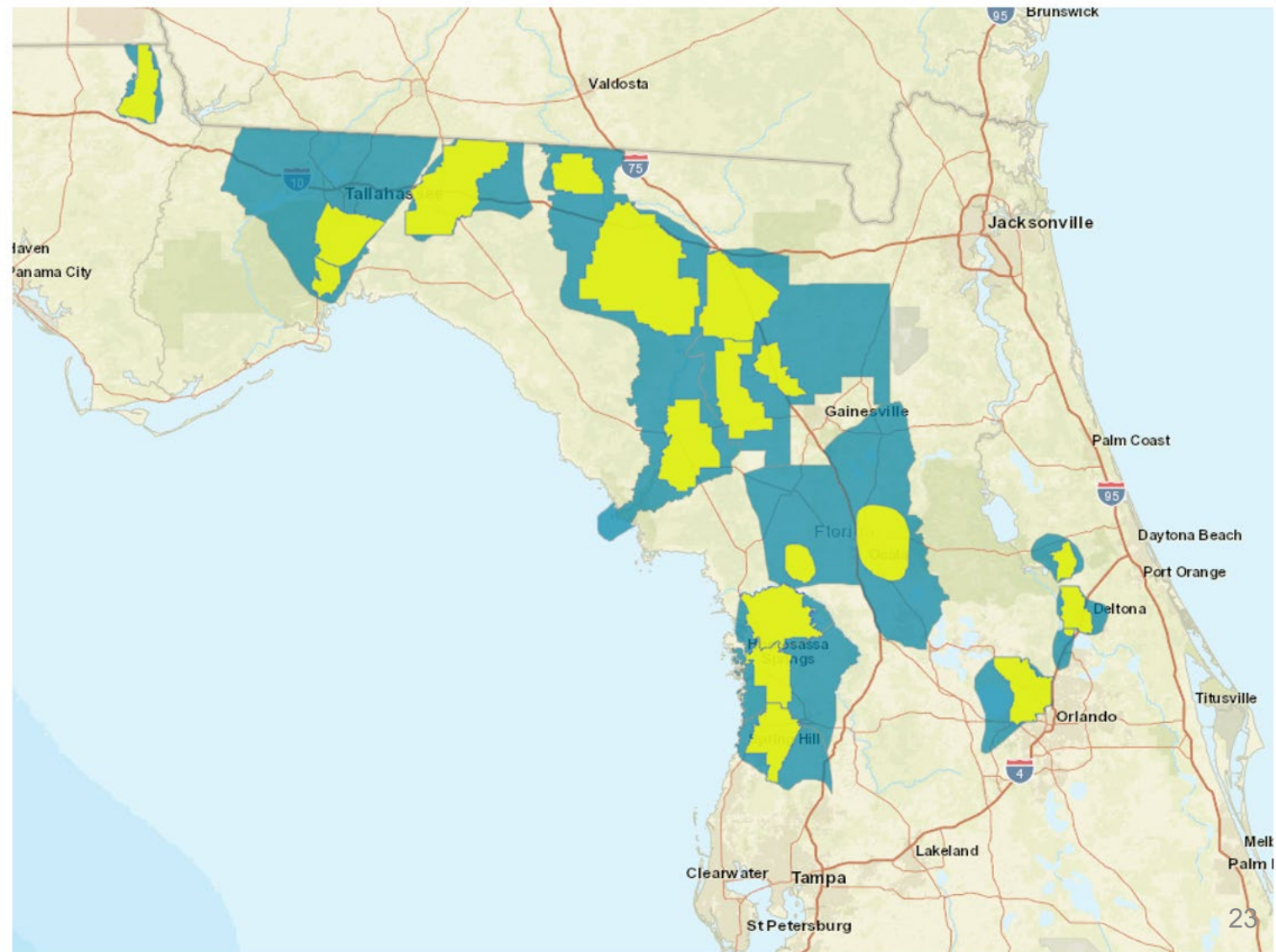


BASIN MANAGEMENT ACTION PLANS





BASIN MANAGEMENT ACTION PLANS





STATEWIDE ANNUAL REPORT (STAR)

Statewide Annual Report on TMDLs, BMAPs, Minimum Flows or Minimum Water Levels, and Recovery or Prevention Strategies

- Requirement under section 403.0675, Florida Statutes, to provide an annual update to the Governor and Legislature.
- Reports on restoration projects and management strategies.
- This year will be the fifth year of reporting (over 6,000 projects).
- FloridaDEP.gov/STAR.

November

January

February
through June

July



STATUS OF PROJECTS STORY MAP

Lake Okeechobee Basin Management Action Plan

- Introduction
- Overview
- Location
- Projects
- Progress
- Contacts & More Information



Photo: Wayne Jones CC BY-NC-ND 2.0 logo

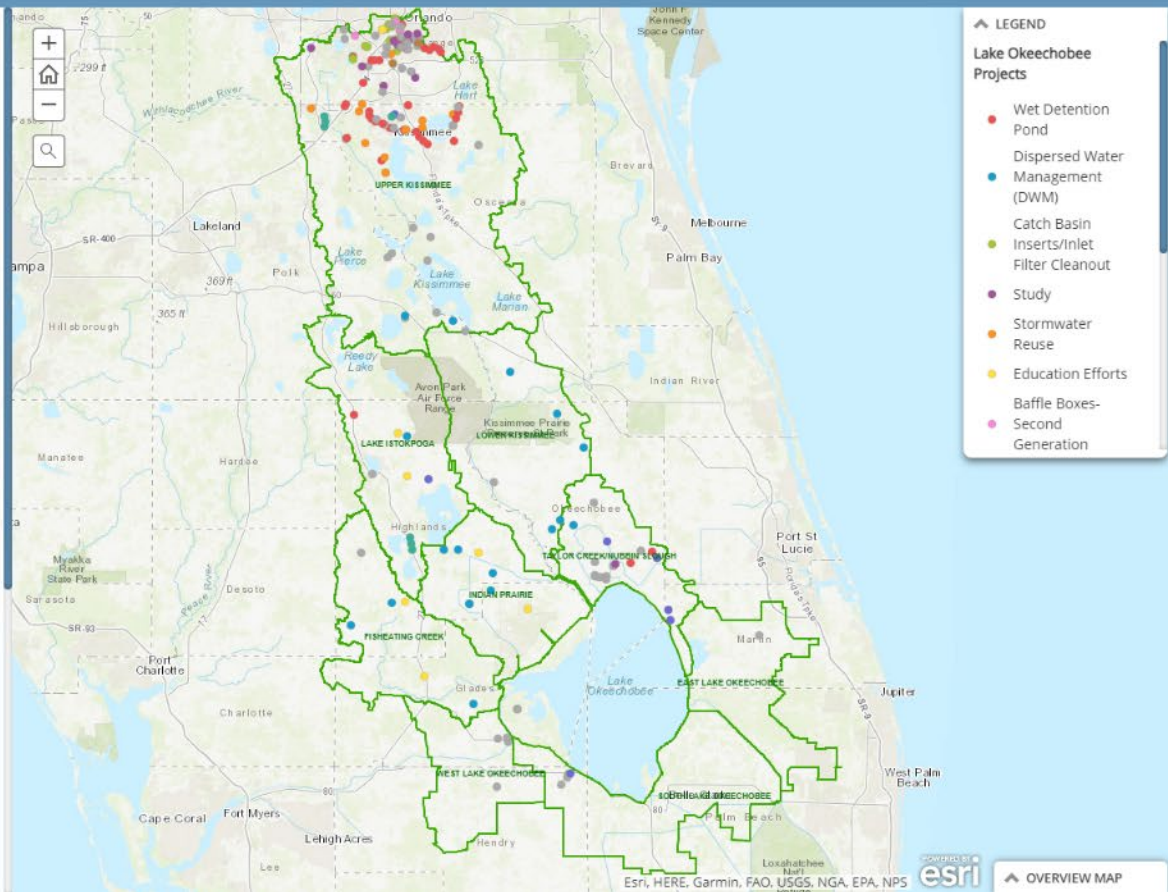
Actions to Achieve Nutrient Load Reductions

The Lake Okeechobee BMAP is designed to be implemented in a phased approach to allow for adaptive management. The phased BMAP approach allows for the implementation of projects designed to achieve incremental reductions, while simultaneously monitoring and conducting studies to better understand the water quality dynamics (sources and response variables) in the watershed.

For the first BMAP phase, DEP focused on project implementation in the six subwatersheds north of Lake Okeechobee. Under the 2020 BMAP, projects and strategies are tracked in all nine sub-watersheds.

Municipal, regional, state, and federal agencies, as well as agricultural producers, have responsibilities under the BMAP to implement structural and nonstructural activities to reduce TP to Lake Okeechobee. Public-private partnerships and regional projects represent many management strategies in the LOW.

All agricultural nonpoint sources in the BMAP area are statutorily required either to implement appropriate best management practices or to conduct water quality monitoring that demonstrates compliance with state water quality standards. The Florida Department of Agriculture and Consumer Services' Office of Agricultural Water





BMAPs (PORTAL)

The screenshot shows the DEP Business Portal homepage. At the top left is the Florida Department of Environmental Protection logo. The main header reads "BUSINESS PORTAL" in large white letters on a dark blue background. To the right of the header is the "DEP Portal" logo with the tagline "Enterprise Solutions". Below the header, there are links for "Register" and "Already have an account? Sign In". The main content area features a "Welcome" message: "Welcome to the Florida Department of Environmental Protection's Business Portal. If you don't find what you're looking for, please come back as we're continually adding to the site." Below this is a search bar labeled "Search the Site:". A section titled "I would like to:" contains three blue buttons: "Apply" (with a pencil icon) for building, repair, operate, and discharge; "Pay" (with a dollar sign icon) for fees, invoices, park reservations; and "Sign Up" (with a checkmark icon) for subscriptions, newsletters, and notifications.

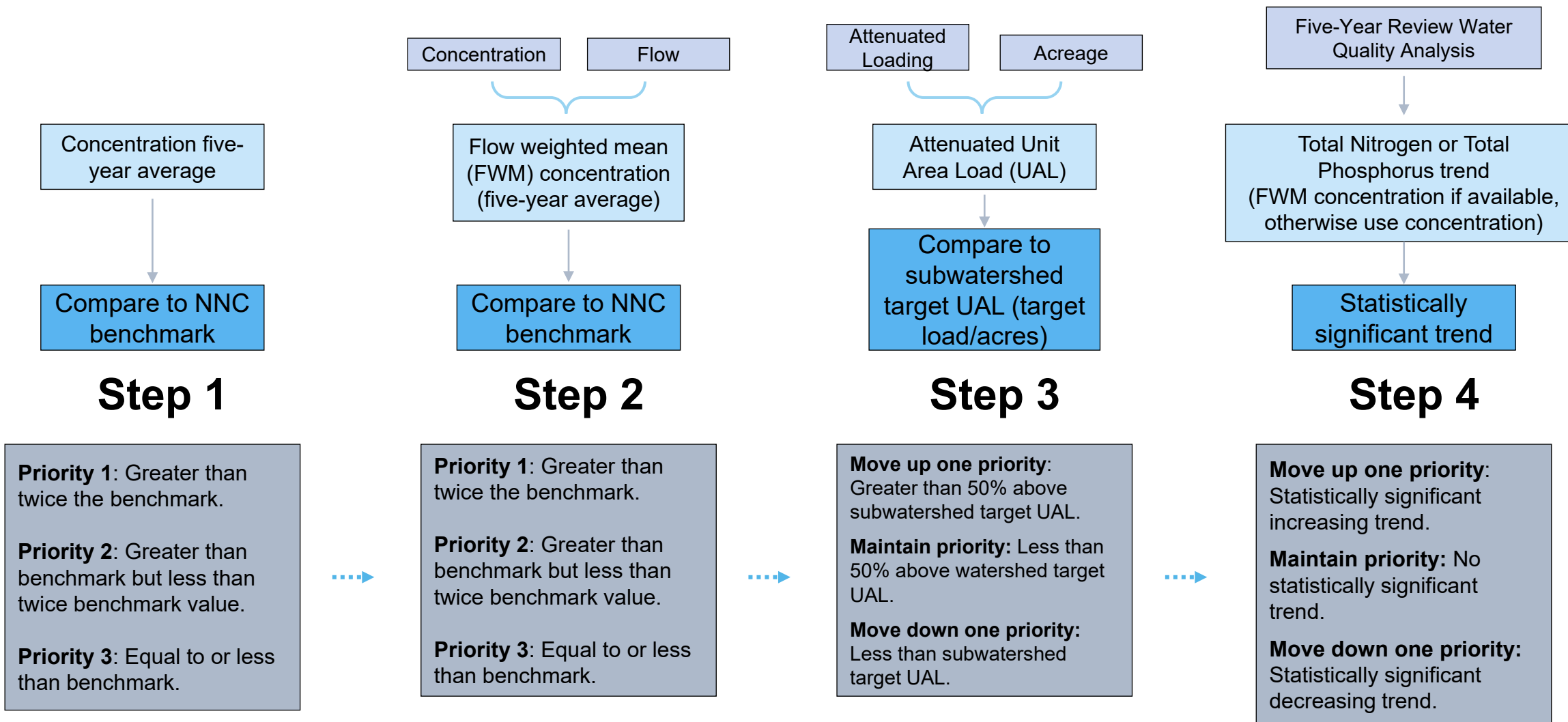
- STAR transitioning to full electronic reporting.
- Over 400 entities reporting projects.
- For STAR 2022, all entities will be required to use the portal to review and submit project updates.
- Plan to integrate with other DEP databases/programs.

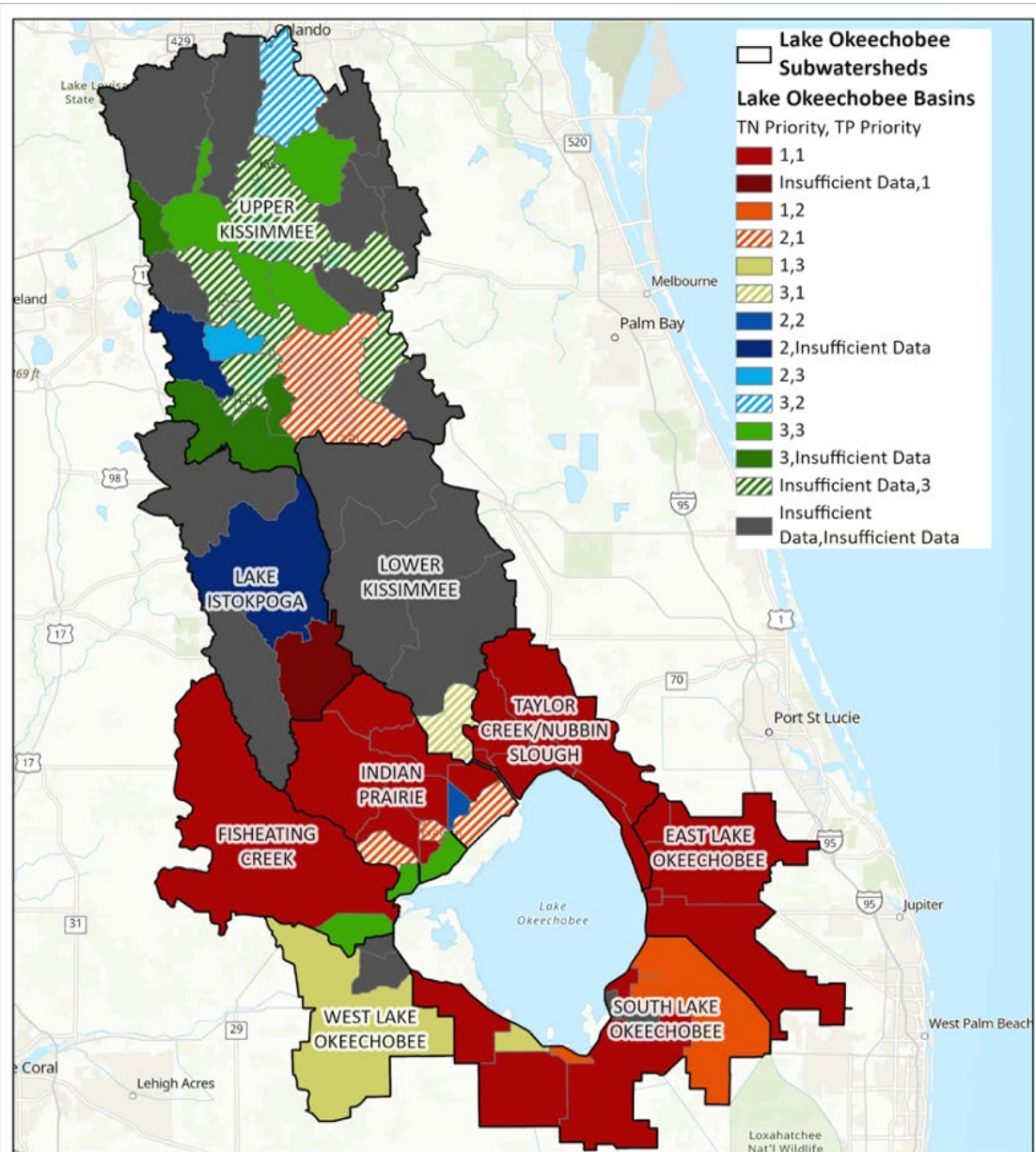


www.fldepportal.com/DepPortal/go/home



TARGETED RESTORATION AREAS (TRA) APPROACH





Lake Okeechobee - TRA Summary
 Map prepared by Division of Environmental Assessment and Restoration.
 This map is not for legal decision making purposes.
 [BMAP] Diana Turner (850) 245-8825
 Map ID: TRA Summary
 Created 17-05-2022

0 15 30 60 Miles

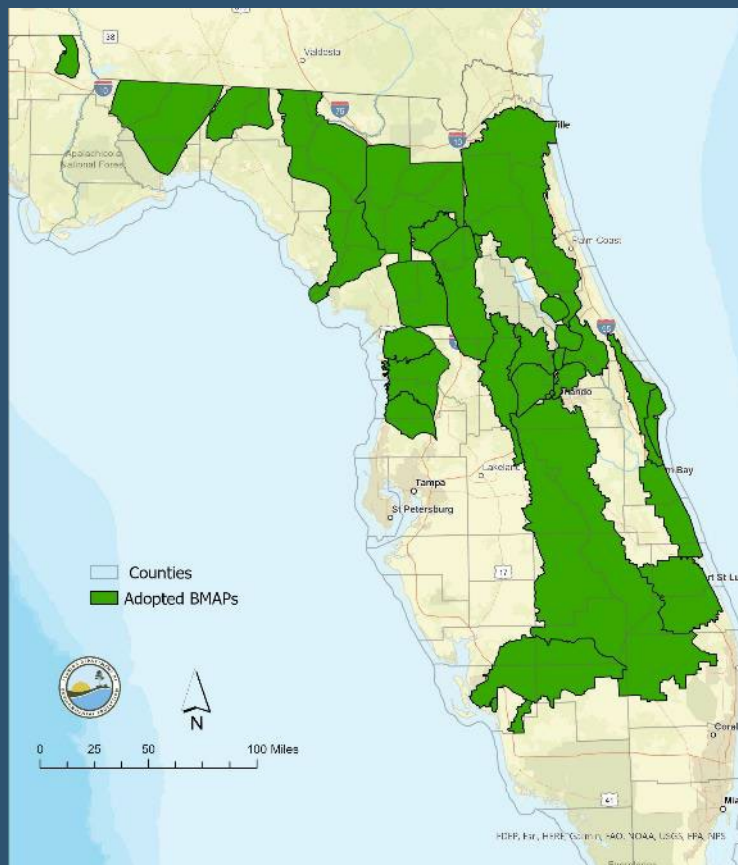


CLEAN WATERWAYS ACT REQUIREMENTS

Wastewater Treatment Plans

- Inventory of wastewater treatment facilities within jurisdiction of local governments.
- Summary of each facility's current status, which may include:
 - Permitted capacity.
 - Average discharge.
 - Permitted nutrient limits.
 - Average nutrient concentration.
 - Estimated average nutrient load.
- Summary of capacity analysis for each facility:
 - Including plans for future growth.
- Ranking or list of facility upgrades needed to meet requirements.
- Timelines/milestones for all projects.
- Funding estimates for all projects.

Nutrient BMAPs



Adopted by July 1, 2025

OSTDS Remediation Plans

- Inventory of onsite sewage treatment and disposal systems (OSTDS) within jurisdiction of local governments.
- Plan to address OSTDS in the future:
 - Areas for sewerage and/or enhancements and prioritization of those areas.
 - Summary of capacity analysis for wastewater facilities that would accept newly seweraged areas.
 - Timelines/milestones for projects.
 - Funding estimates for all projects.
 - Future growth considerations.



THANK YOU

Kevin Coyne
850-245-8555