



Identifying Nutrient Sources in Basin Management Action Plans - Recap

Kimberly Shugar

Director / Environmental Assessment and Restoration

Diana Turner

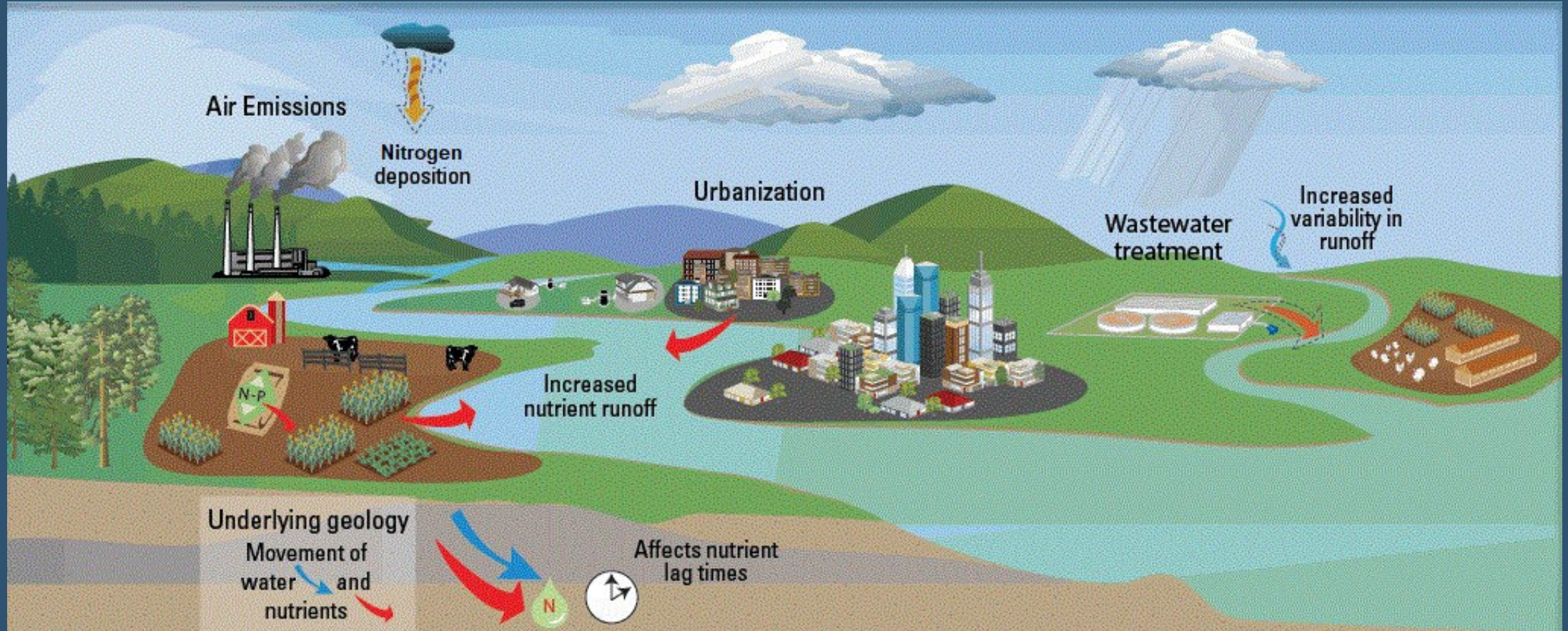
Environmental Administrator / Environmental Assessment and Restoration

Florida Department of Environmental Protection

Ft. Myers, Florida | June 20, 2023



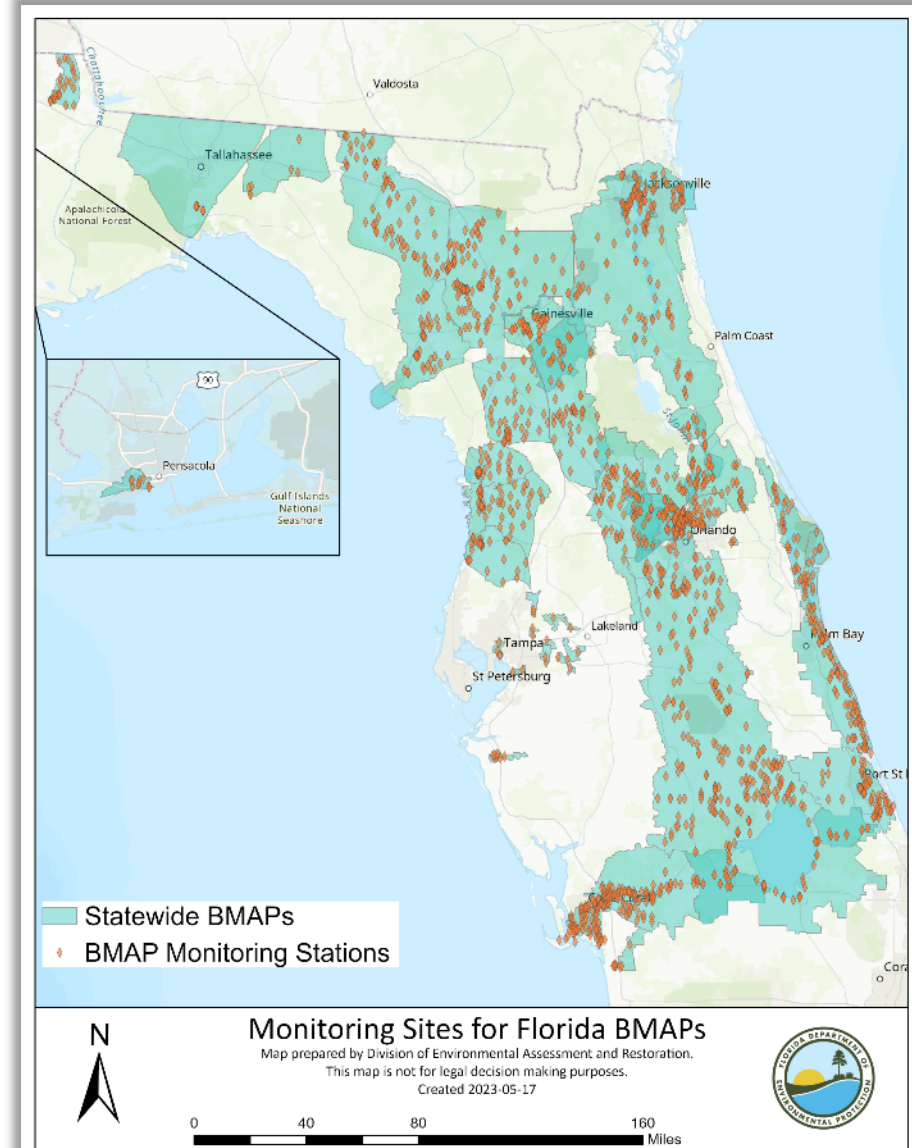
SOURCES OF NUTRIENTS





WATER QUALITY ANALYSES / EVALUATIONS

- **Water quality monitoring.**
 - Surface and groundwater stations.
 - Monitoring typically targets the watersheds of the target waterbody.
- **Water quality evaluation.**
 - Water quality trend analyses.
 - Hot spot analysis.
- **Groundwater well data evaluation.**
 - To be completed for BMAP updates.





IDENTIFYING NUTRIENT SOURCES EXAMPLE

CALOOSAHAATCHEE RIVER AND ESTUARY BMAP

• Watershed Model:

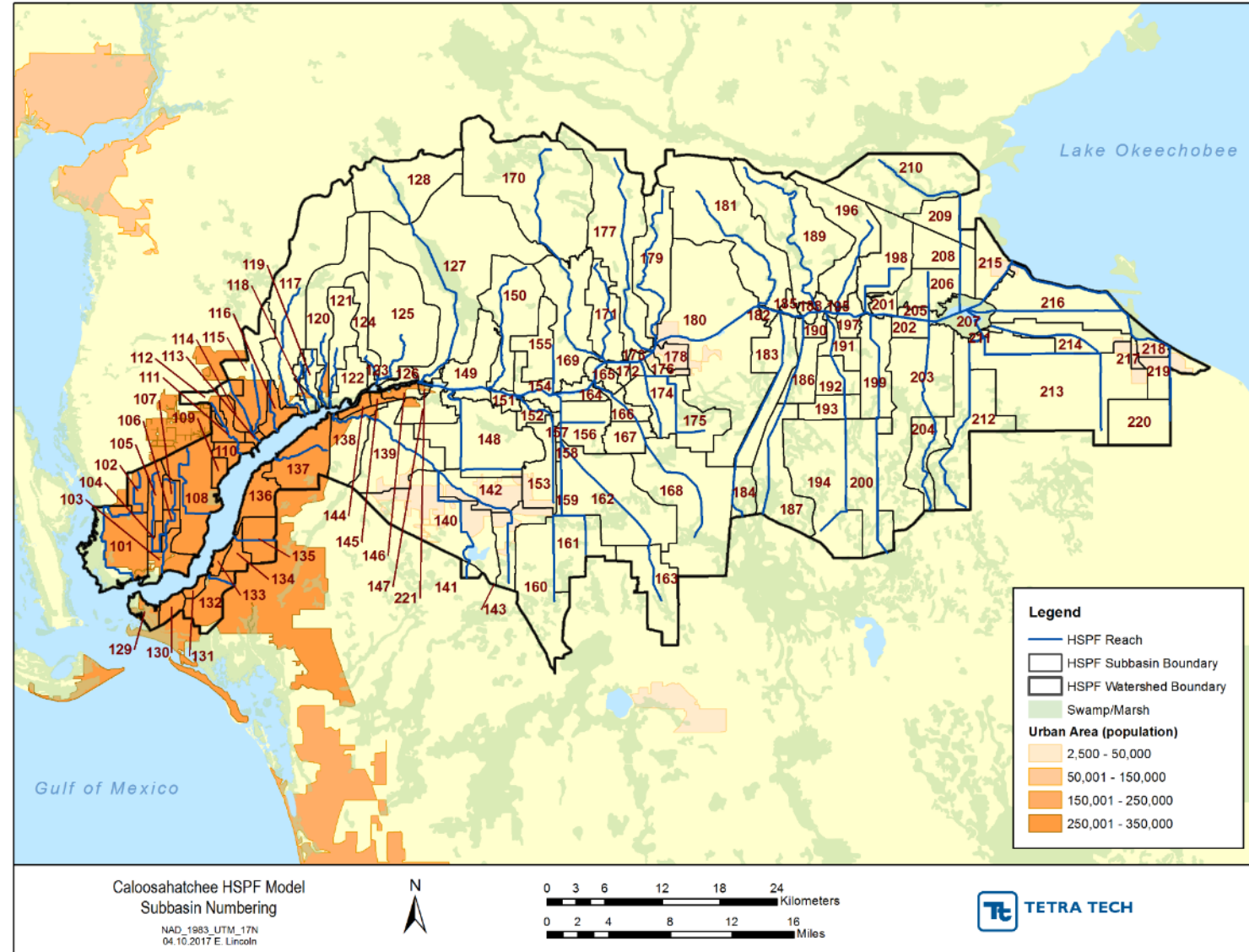
- HSPF.
- Data Sources.

• Water Quality Monitoring:

- Stations located throughout watershed.
- In order to better refine source identification, expansion of monitoring network is needed.

• Water Quality Data Analyses:

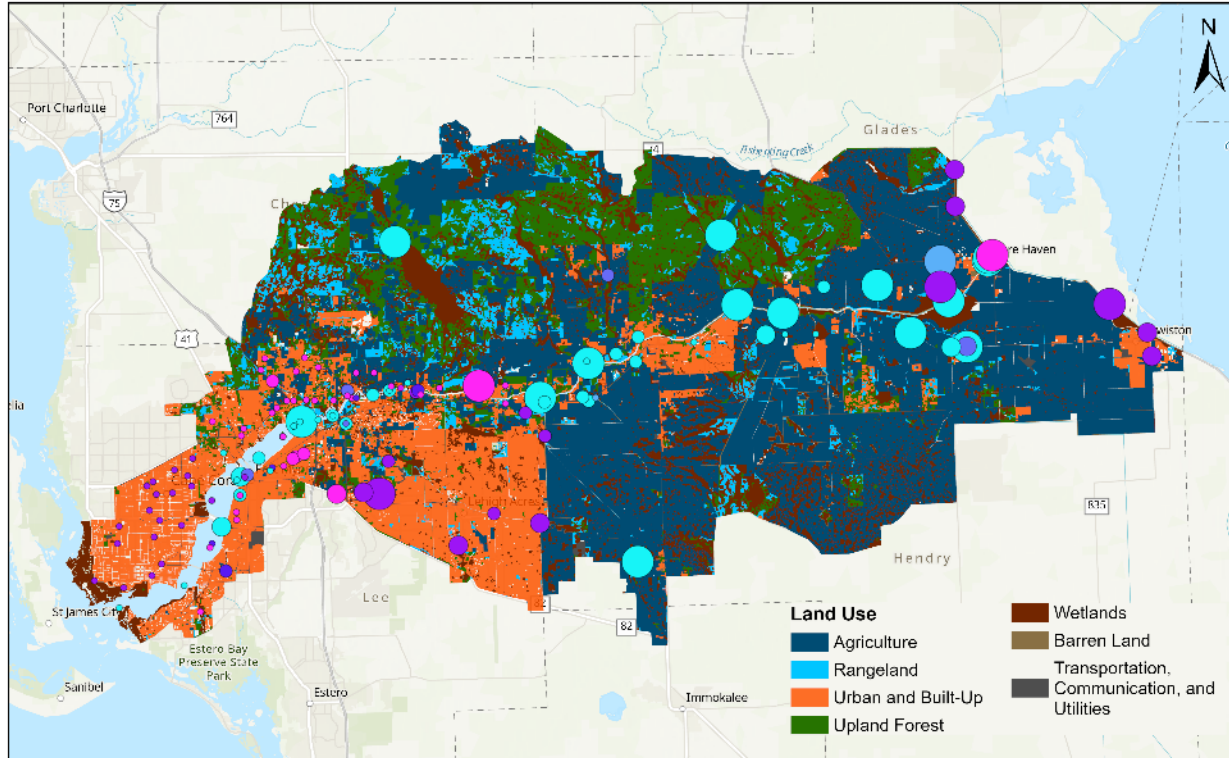
- Trend Analyses.
- Hotspot Analysis.



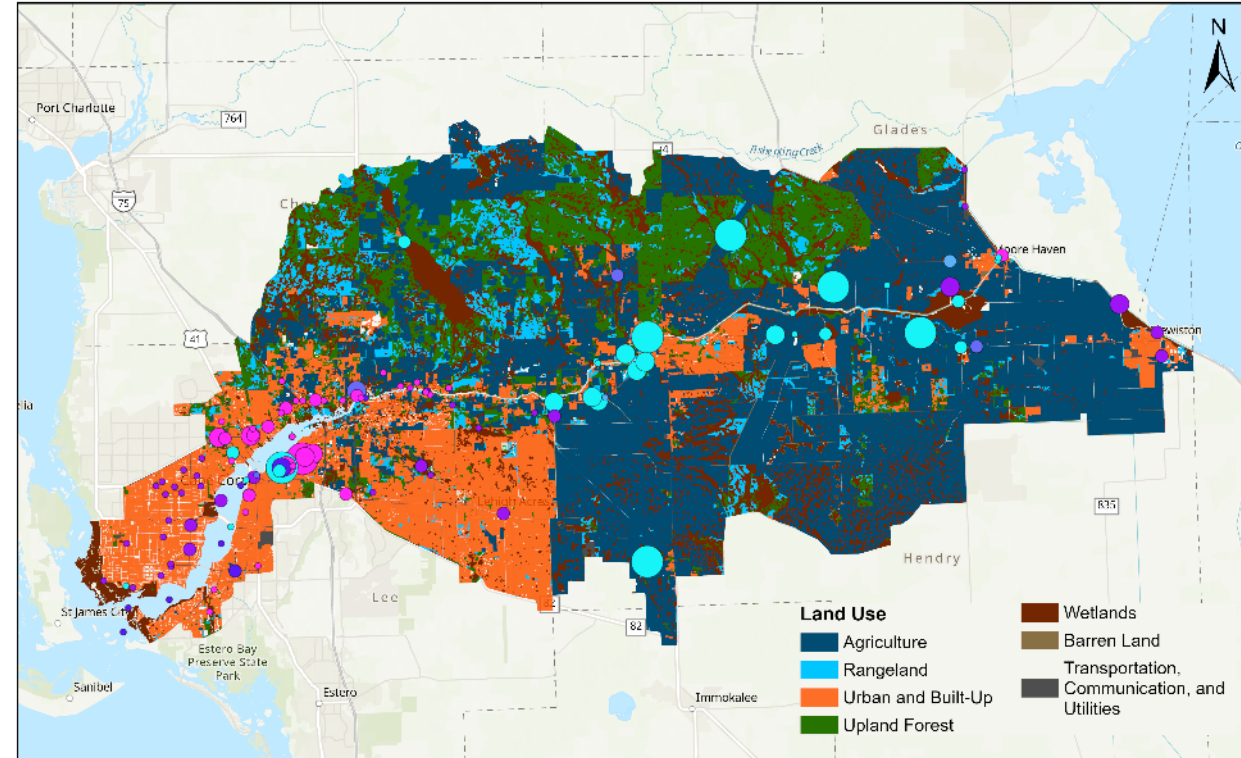
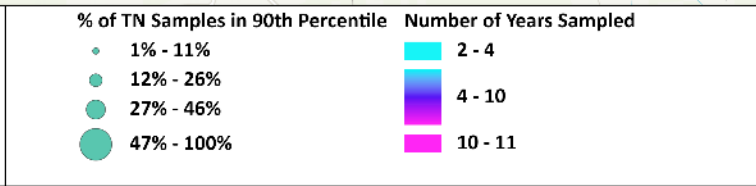


WATER QUALITY ANALYSES

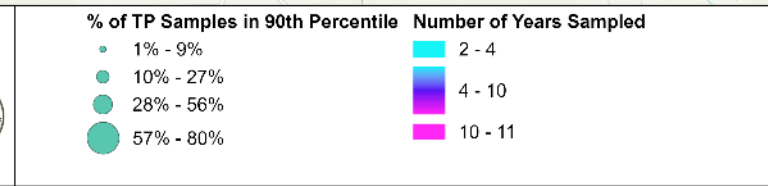
HOT SPOT ANALYSES



Caloosahatchee BMAP
 Map prepared by the Division of Environmental Assessment and Restoration.
 This map is not for legal decision making purposes.
 Map ID: TN Hotspot
 Created: 06-04-2023



Caloosahatchee BMAP
 Map prepared by the Division of Environmental Assessment and Restoration.
 This map is not for legal decision making purposes.
 Map ID: TP Hotspot
 Created: 06-04-2023





THANK YOU

Kimberly Shugar

850-245-7518

Kimberly.Shugar@FloridaDEP.gov

Diana Turner

850-245-8825

Diana.M.Turner@FloridaDEP.gov